

Welcome TO FRANCE

HELPING YOU TO SETTLE IN

www.welcometofrance.com

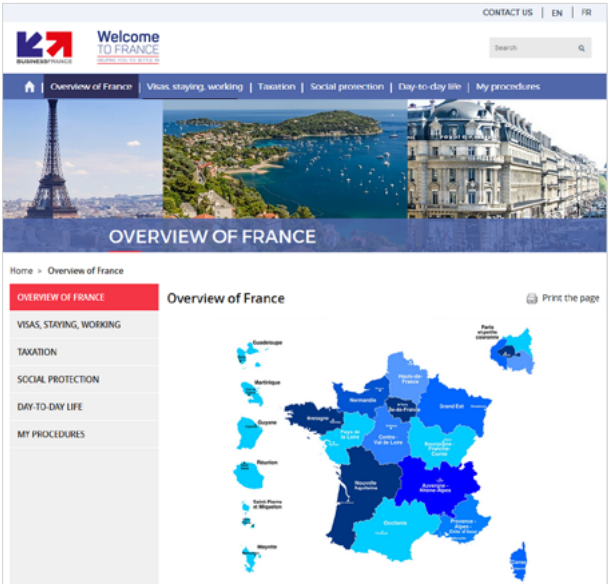
Business France has set up an information service for foreign talent and their families transferred to France for professional reasons.

The “Welcome to France” online service is here to guide you through the various procedures involved in moving to work in France.

INFORMATION

welcometofrance.com provides information to foreign talent and their families about a number of different procedures, including the following:

- Visas, residence permits and work permits
- Taxation
- Social security coverage
- Day-to-day life (schools, accommodation, etc.)



THE SERVICES IT PROVIDES ARE DESIGNED TO HELP



GUIDANCE

welcometofrance.com helps you understand the main procedures you need to go through before you relocate to France and in the year following your move, providing you with a personalized guide.

1 STEP 1

Nationality
-- Choose your nationality --

Purpose of your stay
-- Select the purpose of your stay --

Length of your stay
-- Select the length of your stay in France --

SUBMIT

2 STEP 2

You are a director, an entrepreneur or a startup owner, you plan to spend more than one year in France

6 MONTHS BEFORE ARRIVAL

HELPFUL TIP

You are an entrepreneur, a startup owner or the director of a multinational company

Whether you are an entrepreneur, a startup owner or the director of a multinational company, you may reside and work in France.

If you meet the criteria for issuance of a "Talent Passport", your family may come with you to France and your spouse may enjoy simplified access to the labor market.

If you are a director of a French company, you may also have an employment contract with this company under certain circumstances. You may only hold such positions subject to the following terms:

- This is a technical role created by the employment contract, which leads to neither to your role as a director;
- You are remunerated for such role separately;
- Your position is that of a subordinate.

The way in which your remuneration is set and structured is crucial in determining whether you may benefit from administrative advantages (e.g. social security scheme for foreigners). This question must be answered before you arrive in France.

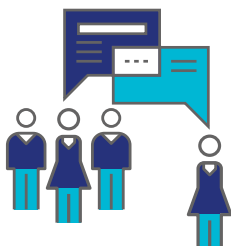
SUPPORT

A specific team specializing in international transfers

If you have any further queries, please contact the Welcome Office via the online form. You will receive a reply within 3 working days.

Head to:

welcometofrance.com/contact-us



Business France is the national agency supporting the international development of the French economy, responsible for fostering export growth by French businesses, as well as promoting and facilitating international investment in France.

It promotes France's companies, business image and nationwide attractiveness as an investment location, and also runs the VIE international internship program.

Founded on January 1, 2015 through a merger between UBIFRANCE and the Invest in France Agency, Business France has 1,500 personnel, both in France and in 70 countries throughout the world, who work with a network of public- and private-sector partners.



**CONNECT,
FAST-TRACK, SUCCEED**

WELCOME OFFICE

www.welcometofrance.com

**JOB-CREATING FOREIGN
INVESTMENT PROJECTS**

invest@businessfrance.fr

**VIE INTERNATIONAL
INTERNSHIP PROGRAM**

0 810 659 659

infovie@businessfrance.fr

**FOR FURTHER INFORMATION,
PLEASE VISIT:**

www.businessfrance.fr

Business France

77 boulevard Saint-Jacques

75680 Paris Cedex 14

Tel.: +33 (0)1 40 73 30 00

